

# EasyOne Pro Cart

Bring your mobile PFT Lab closer to the point of care



## Have your device and all accessories always at hand

The EasyOne Pro Cart is specially designed for mounting your EasyOne Pro or EasyOne Pro LAB. You can mount up to two gas bottles onto the cart and store your disposables as well.

The EasyOne Pro Cart is designed to be used inside buildings.

Excellent stability  
Easy maneuverability



### EasyOne Pro Cart\*

<b>Total load capacity</b>	65 kg
<b>Twin gas bottle holder</b>	Load capacity: 2 × 20 kg (total 40 kg)
<b>Dimensions</b>	530 mm (w) × 610 mm (d) × 830 mm (h)
<b>Weight</b>	26 kg
<b>Material</b>	Steel and aluminium
<b>Color</b>	RAL 7035 light grey and RAL 2906035 purple
<b>Operating conditions</b>	Usual hospital and practice conditions
<b>Transport and storage conditions</b>	Temperature: -25°C bis 70°C Humidity: 10% to 95% Pressure: 500 hPa to 1200 hPa
<b>Device class</b>	Class I
<b>Oder Information</b>	Part number: 3000-08.01

### Keyboard Drawer\*\*

<b>Dimensions</b>	450 mm (w) × 270 mm (d) for keyboard 200 mm × 200 mm for mousepad
<b>Weight</b>	5 kg
<b>Material</b>	Steel and aluminium
<b>Color</b>	RAL 7035 light grey
<b>Oder Information</b>	Part number: 3000-08.10

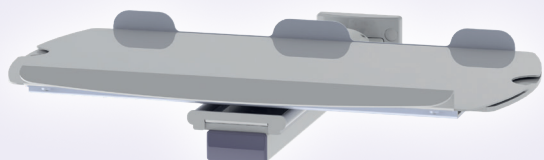
### Board for Printer\*\*

<b>Load capacity</b>	20 kg
<b>Dimensions</b>	424 mm (w) × 430 mm (d)
<b>Weight</b>	4 kg
<b>Material</b>	Steel and aluminium
<b>Color</b>	RAL 7035 light grey
<b>Oder Information</b>	Part number: 3000-08.11

\* Compatible with EasyOne Pro / EasyOne Pro LAB

\*\* Compatible with EasyOne Pro Cart

## Keyboard Drawer \*



## Board for Printer \*



### Technical Data

<b>Dimensions</b>	450 mm (w) × 270 mm (d) for keyboard 200 mm × 200 mm for mousepad
<b>Weight</b>	5 kg
<b>Material</b>	Steel and aluminium
<b>Color</b>	RAL 7035 light grey
<b>Oder Information</b>	Part number: 3000-08.10

\* Compatible with EasyOne Pro Cart

### Technical Data

<b>Load capacity</b>	20 kg
<b>Dimensions</b>	424 mm (w) × 430 mm (d)
<b>Weight</b>	4 kg
<b>Material</b>	Steel and aluminium
<b>Color</b>	RAL 7035 light grey
<b>Oder Information</b>	Part number: 3000-08.11

\* Compatible with EasyOne Pro Cart